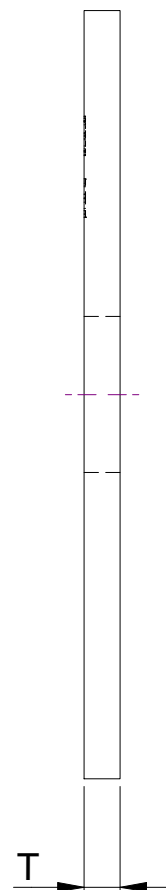
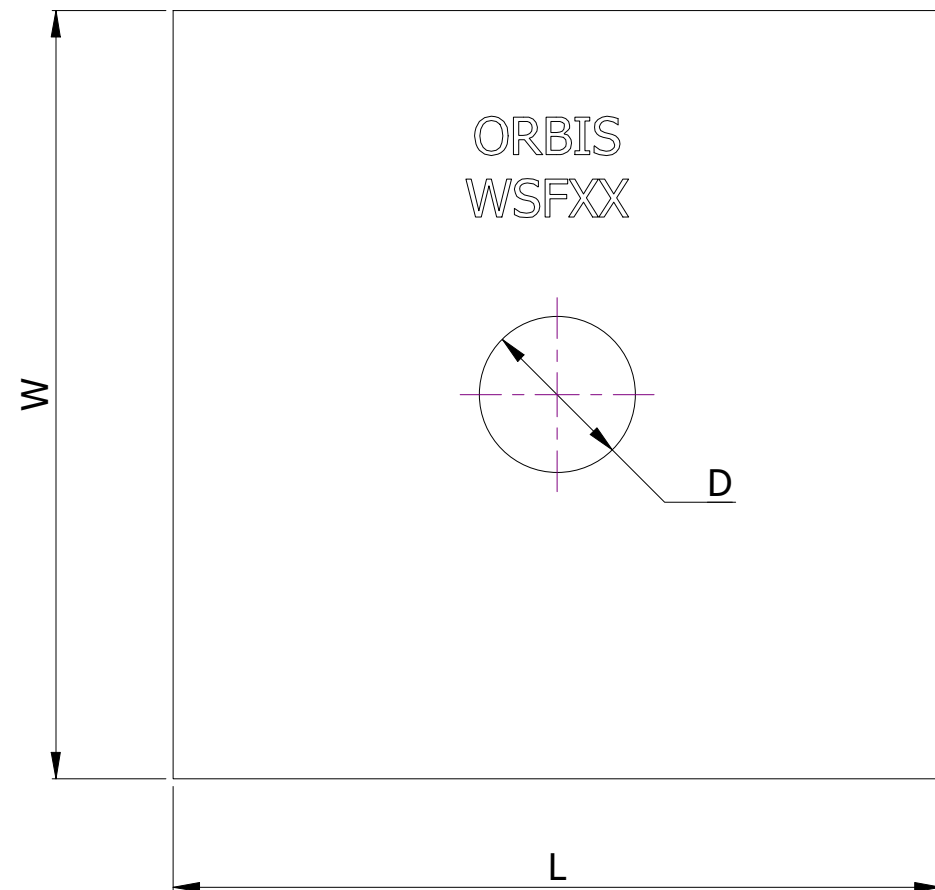


SR NO	STAMP CODE	PART NUMBER	DESCRIPTION	L (INCH)	W (INCH)	D (INCH)	T (INCH)
1	WSF36	WSF6G-1516	WASHER SQUARE FLAT 6" X 6" 15/16" HOLE HDG 1/4" THICKNESS (WSF36)	6	6	15/16	1/4
2	WSF45	WSF6H-116	WASHER SQUARE FLAT 6" X 6" 1-1/16" HOLE HDG 3/8" THICKNESS (WSF45)	6	6	1-1/16	3/8
3	WSF46	WSF6H-118	WASHER SQUARE FLAT 6" X 6" 1-1/8" HOLE HDG 3/8" THICKNESS (WSF46)	6	6	1-1/8	3/8
4	WSF51	WSF6J-116	WASHER SQUARE FLAT 6" X 6" 1-1/16" HOLE HDG 1/2" THICKNESS (WSF51)	6	6	1-1/16	1/2
5	WSF52	WSF6J-118	WASHER SQUARE FLAT 6" X 6" 1-1/8" HOLE HDG 1/2" THICKNESS (WSF52)	6	6	1-1/8	1/2



THICKNESS CHART		
FRACTION	DECIMAL	NOMENCLATURE
5/64"	0.07	A
7/64"	0.1	B
1/8"	0.125	C
9/64"	0.14	D
5/32"	0.15	E
3/16	.1875	F
1/4"	.25	G
3/8"	.375	H
7/16"	.4375	I
1/2"	.5	J

- NOTES:
- HOT DIP GALVANIZED AS PER ASTM A-153
 - MATERIAL - HOT ROLLED STEEL
 - ALL MEASUREMENTS IN INCHES.

THIS DRAWING
CONTAINS
CONFIDENTIAL
INFORMATION
AND IS THE
EXCLUSIVE
PROPERTY OF
ORBIS
MANUFACTURING

ORBIS

DRAWN	MSM	DATE	21-07-2022
APPROVED	DMM	DATE	26-07-2022
REVISION	-		

DRAWING NUMBER

WSF6G-XXXX

DESCRIPTION

WASHER 6" SQUARE FLAT