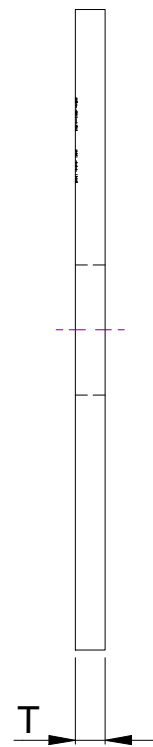
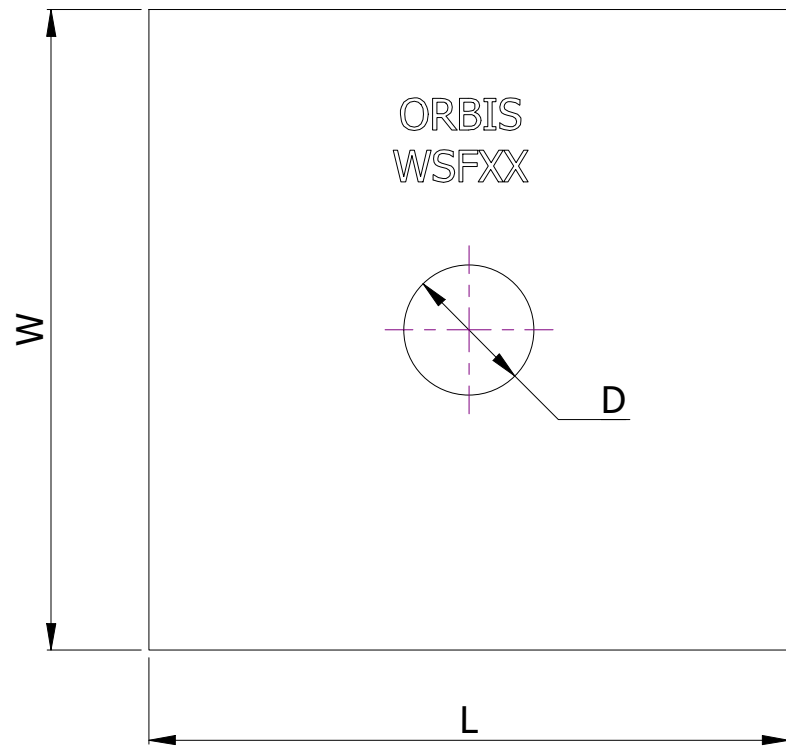


SR NO	STAMP CODE	PART NUMBER	DESCRIPTION	L (INCH)	W (INCH)	D (INCH)	T (INCH)
1	WSF4	WSF4C-1116	WASHER SQUARE FLAT 4"X 4" 11/16" HOLE HDG 1/8" THICKNESS (WRF4)	4	4	11/16	1/8
2	WSF13	WSF4F-1116	WASHER SQUARE FLAT 4" X 4" 11/16" HOLE HDG 3/16" THICKNESS (WRF13)	4	4	11/16	3/16
3	WSF14	WSF4F-1316	WASHER SQUARE FLAT 4" X 4" 13/16" HOLE HDG 3/16" THICKNESS (WRF14)	4	4	13/16	3/16
4	WSF31	WSF4G-1116	WASHER SQUARE FLAT 4" X 4" 11/16" HOLE HDG 1/4" THICKNESS (WRF31)	4	4	11/16	1/4
5	WSF32	WSF4G-1316	WASHER SQUARE FLAT 4" X 4" 13/16" HOLE HDG 1/4" THICKNESS (WRF32)	4	4	13/16	1/4
6	WSF33	WSF4G-78	WASHER SQUARE FLAT 4" X 4" 7/8" HOLE HDG 1/4" THICKNESS (WRF33)	4	4	7/8	1/4
7	WSF34	WSF4G-1516	WASHER SQUARE FLAT 4" X 4" 15/16" HOLE HDG 1/4" THICKNESS (WRF34)	4	4	15/16	1/4
8	WSF35	WSF4G-116	WASHER SQUARE FLAT 4" X 4" 1-1/16" HOLE HDG 1/4" THICKNESS (WRF35)	4	4	1-1/16	1/4
9	WSF40	WSF4H-1316	WASHER SQUARE FLAT 4" X 4" 13/16" HOLE HDG 3/8" THICKNESS (WRF40)	4	4	13/16	3/8
10	WSF41	WSF4H-1516	WASHER SQUARE FLAT 4" X 4" 15/16" HOLE HDG 3/8" THICKNESS (WRF41)	4	4	15/16	3/8
11	WSF42	WSF4H-1	WASHER SQUARE FLAT 4" X 4" 1" HOLE HDG 3/8" THICKNESS (WRF42)	4	4	1	3/8
12	WSF43	WSF4H-116	WASHER SQUARE FLAT 4" X 4" 1-1/16" HOLE HDG 3/8" THICKNESS (WRF43)	4	4	1-1/16	3/8
13	WSF44	WSF4H-118	WASHER SQUARE FLAT 4" X 4" 1-1/8" HOLE HDG 3/8" THICKNESS (WRF44)	4	4	1-1/8	3/8
14	WSF47	WSF4J-1316	WASHER SQUARE FLAT 4" X 4" 13/16" HOLE HDG 1/2" THICKNESS (WRF47)	4	4	13/16	1/2
15	WSF48	WSF4J-118	WASHER SQUARE FLAT 4" X 4" 1-1/8" HOLE HDG 1/2" THICKNESS (WRF48)	4	4	1-1/8	1/2
16	WSF49	WSF45J-1316	WASHER SQUARE FLAT 4" X 5" 13/16" HOLE HDG 1/2" THICKNESS (WRF49)	4	5	13/16	1/2



THICKNESS CHART		
FRACTION	DECIMAL	NOMENCLATURE
5/64"	0.07	A
7/64"	0.1	B
1/8"	0.125	C
9/64"	0.14	D
5/32"	0.15	E
3/16	.1875	F
1/4"	.25	G
3/8"	.375	H
7/16"	.4375	I
1/2"	.5	J

**NOTES:**

- HOT DIP GALVANIZED AS PER ASTM A-153
- MATERIAL - HOT ROLLED STEEL
- ALL MEASUREMENTS IN INCHES.

THIS DRAWING CONTAINS CONFIDENTIAL INFORMATION AND IS THE EXCLUSIVE PROPERTY OF ORBIS MANUFACTURING



DRAWN	MSM	DATE	21-07-2022
APPROVED	DMM	DATE	26-07-2022
REVISION	R1.1		

**DRAWING NUMBER**

WSF4C-XXXX

**DESCRIPTION**

WASHER 4" SQUARE FLAT