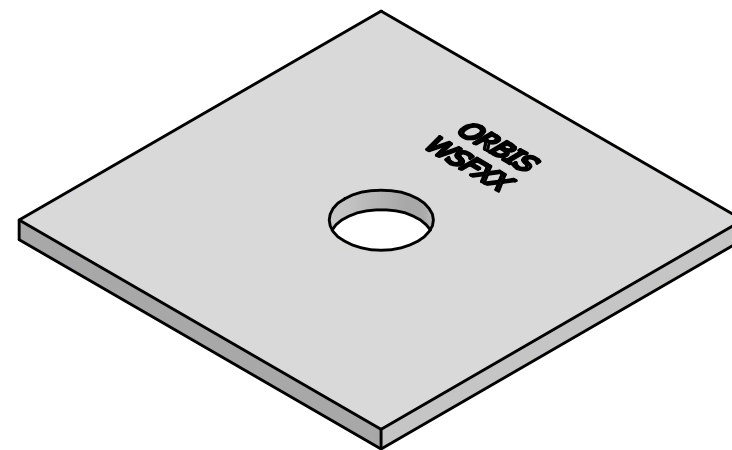
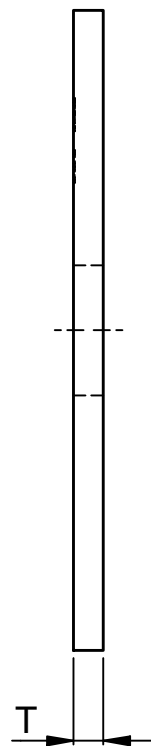
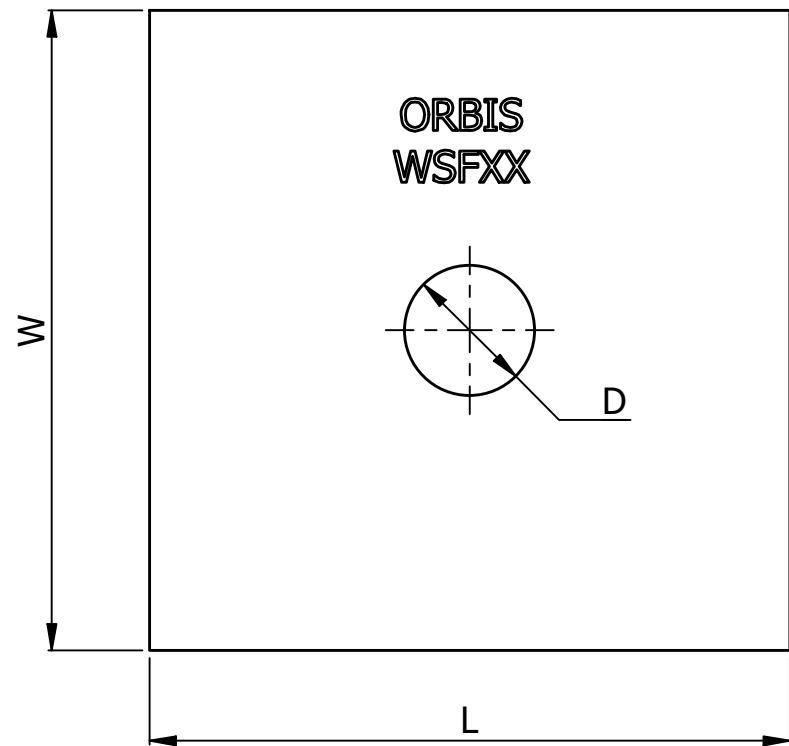


SR NO	STAMP CODE	PART NUMBER	DESCRIPTION	L (INCH)	W (INCH)	D (INCH)	T (INCH)
1	WSF1	WSF2C-916	WASHER SQUARE FLAT 2"X 2" 9/16" HOLE HDG 1/8" THICKNESS (WRF1)	2	2	9/16	1/8
2	WSF2	WSF2C-1116	WASHER SQUARE FLAT 2"X 2" 11/16" HOLE HDG 1/8" THICKNESS (WRF2)	2	2	11/16	1/8
3	WSF3	WSF2C-1316	WASHER SQUARE FLAT 2"X 2" 13/16" HOLE HDG 1/8" THICKNESS (WRF3)	2	2	13/16	1/8
4	WSF5	WSF2F-916	WASHER SQUARE FLAT 2"X 2" 9/16" HOLE HDG 3/16" THICKNESS (WRF5)	2	2	9/16	3/16
5	WSF6	WSF2F-1116	WASHER SQUARE FLAT 2"X 2" 11/16" HOLE HDG 3/16" THICKNESS (WRF6)	2	2	11/16	3/16
6	WSF7	WSF2F-1316	WASHER SQUARE FLAT 2"X 2" 13/16" HOLE HDG 3/16" THICKNESS (WRF7)	2	2	13/16	3/16
7	WSF15	WSF2G-916	WASHER SQUARE FLAT 2" X 2" 9/16" HOLE HDG 1/4" THICKNESS (WRF15)	2	2	9/16	1/4
8	WSF16	WSF2G-1116	WASHER SQUARE FLAT 2" X 2" 11/16" HOLE HDG 1/4" THICKNESS (WRF16)	2	2	11/16	1/4
9	WSF17	WSF2G-1316	WASHER SQUARE FLAT 2" X 2" 13/16" HOLE HDG 1/4" THICKNESS (WRF17)	2	2	13/16	1/4
10	WSF8	WSF225F-916	WASHER SQUARE FLAT 2-1/4" X 2-1/4" 9/16" HOLE HDG 3/16" THICKNESS (WRF8)	2-1/4	2-1/4	9/16	3/16
11	WSF9	WSF225F-1116	WASHER SQUARE FLAT 2-1/4" X 2-1/4" 11/16" HOLE HDG 3/16" THICKNESS (WRF9)	2-1/4	2-1/4	11/16	3/16
12	WSF10	WSF225F-1316	WASHER SQUARE FLAT 2-1/4" X 2-1/4" 13/16" HOLE HDG 3/16" THICKNESS (WRF10)	2-1/4	2-1/4	13/16	3/16
13	WSF18	WSF225G-916	WASHER SQUARE FLAT 2-1/4" X 2-1/4" 9/16" HOLE HDG 1/4" THICKNESS (WRF18)	2-1/4	2-1/4	9/16	1/4
14	WSF19	WSF225G-1116	WASHER SQUARE FLAT 2-1/4" X 2-1/4" 11/16" HOLE HDG 1/4" THICKNESS (WRF19)	2-1/4	2-1/4	11/16	1/4
15	WSF20	WSF225G-1316	WASHER SQUARE FLAT 2-1/4" X 2-1/4" 13/16" HOLE HDG 1/4" THICKNESS (WRF20)	2-1/4	2-1/4	13/16	1/4
16	WSF21	WSF250G-1116	WASHER SQUARE FLAT 2-1/2 X 2-1/2" 11/16" HOLE HDG 1/4" THICKNESS (WRF21)	2-1/2	2-1/2	11/16	1/4
17	WSF21.5	WSF250G-1316	WASHER SQUARE FLAT 2-1/2 X 2-1/2" 13/16" HOLE HDG 1/4" THICKNESS (WRF21.5)	2-1/2	2-1/2	13/16	1/4
18	WSF22	WSF250G-1516	WASHER SQUARE FLAT 2-1/2 X 2-1/2" 15/16" HOLE HDG 1/4" THICKNESS (WRF22)	2-1/2	2-1/2	15/16	1/4



THICKNESS CHART		
FRACTION	DECIMAL	NOMENCLATURE
5/64"	0.07	A
7/64"	0.1	B
1/8"	0.125	C
9/64"	0.14	D
5/32"	0.15	E
3/16	.1875	F
1/4"	.25	G
3/8"	.375	H
7/16"	.4375	I
1/2"	.5	J

- NOTES:
- HOT DIP GALVANIZED AS PER ASTM A-153
 - MATERIAL - HOT ROLLED STEEL
 - ALL MEASUREMENTS IN INCHES.

THIS DRAWING CONTAINS CONFIDENTIAL INFORMATION AND IS THE EXCLUSIVE PROPERTY OF ORBIS MANUFACTURING	ORBIS			DRAWING NUMBER	
				WSF2C-XXXX	
				DESCRIPTION	
				WASHER 2" SQUARE FLAT	
DRAWN	MSM	DATE	21-07-2022		
APPROVED	DMM	DATE	26-07-2022		
REVISION	R1.1				