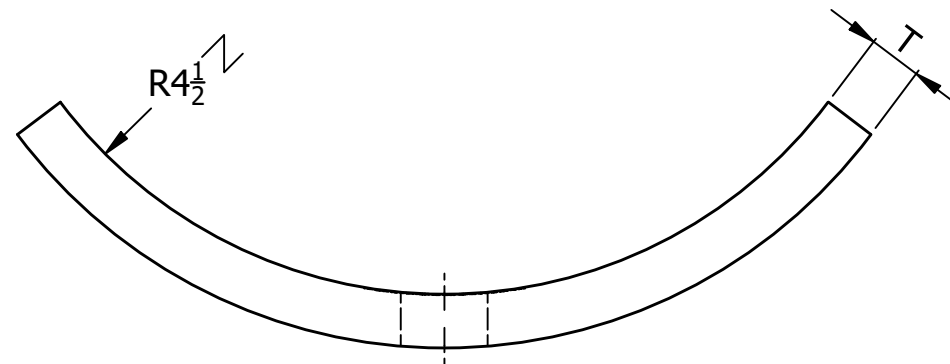
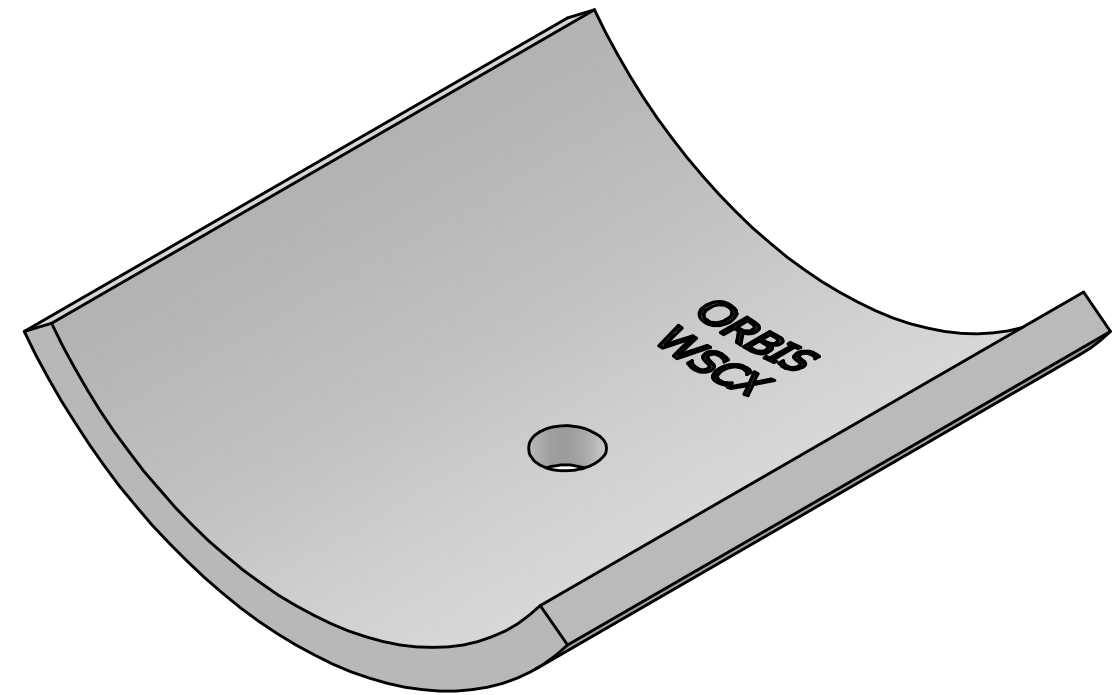
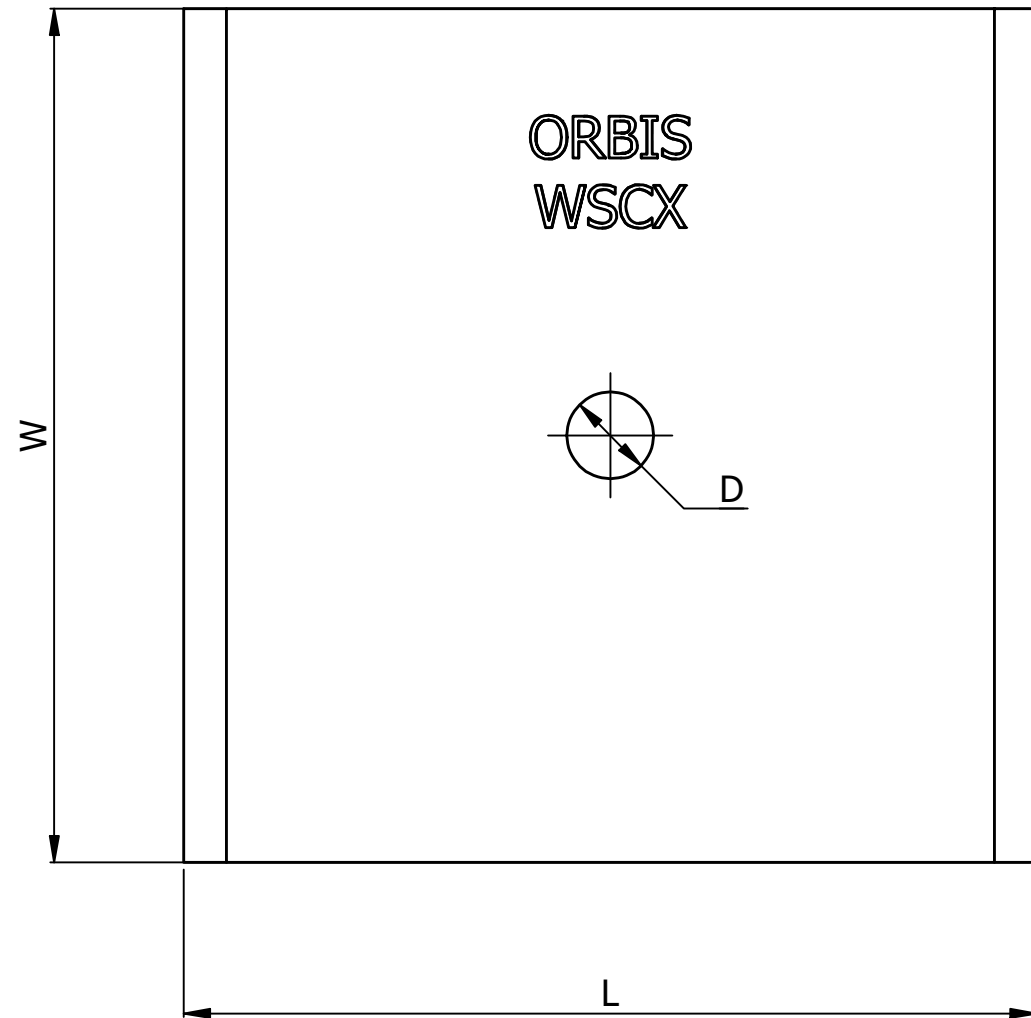


SR NO	STAMP CODE	PART NUMBER	DESCRIPTION	L (INCH)	W (INCH)	D (INCH)	T (INCH)
1	WSC42	WSC8J-1316	WASHER SQUARE CURVED 8" X8" 13/16" HOLE HDG 1/2" THICKNESS (WSC42)	8	8	13/16	1/2
2	WSC43	WSC8J-1516	WASHER SQUARE CURVED 8" X8" 15/16" HOLE HDG 1/2" THICKNESS (WSC43)	8	8	15/16	1/2
3	WSC44	WSC850J-1516	WASHER SQUARE CURVED 8-1/2" X8-1/2" 15/16" HOLE HDG 1/2" THICKNESS (WSC44)	8-1/2	8-1/2	15/16	1/2



NOTES:

1. HOT DIP GALVANIZED AS PER ASTM A-153.
2. MATERIAL - HOT ROLLED STEEL.
3. ALL MEASUREMENTS IN INCHES.

THIS DRAWING
CONTAINS
CONFIDENTIAL
INFORMATION
AND IS THE
EXCLUSIVE
PROPERTY OF
ORBIS
MANUFACTURING

ORBIS

DRAWN	MSM	DATE	01-11-2023
APPROVED	DMM	DATE	06-11-2023
REVISION	R 1.1		

DRAWING NUMBER

WSC8X-XXXX

DESCRIPTION

WASHER 8" SQUARE CURVED