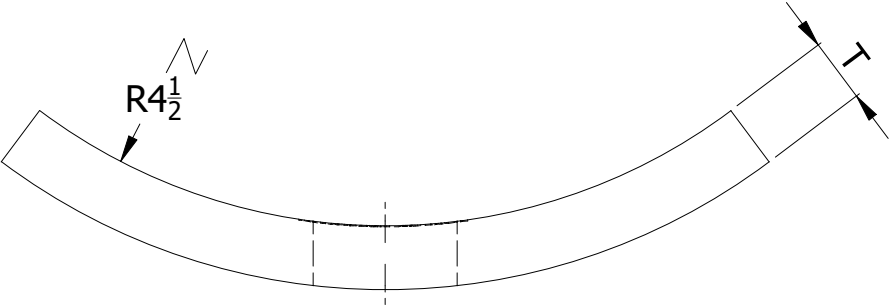
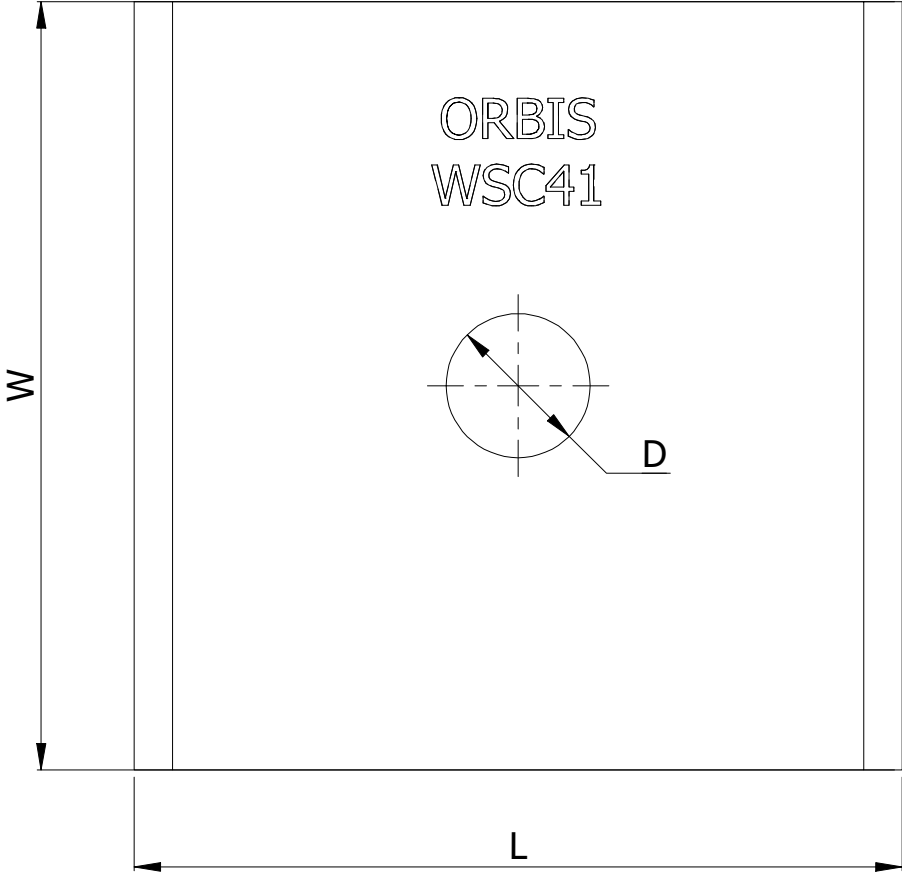



SR NO	STAMP CODE	PART NUMBER	DESCRIPTION	L (INCH)	W (INCH)	D (INCH)	T (INCH)
1	WSC41	WSC66-118	WASHER SQUARE CURVED 6" X 6" 1-1/8" HOLE HDG 1/2" THICKNESS (WSC41)	6	6	1-1/8	1/2



- NOTES:
- 1. HOT DIP GALVANIZED AS PER ASTM A-153
  - 2. MATERIAL - HOT ROLLED STEEL
  - 3. ALL MEASUREMENTS IN INCHES.

THIS DRAWING CONTAINS CONFIDENTIAL INFORMATION AND IS THE EXCLUSIVE PROPERTY OF ORBIS MANUFACTURING					DRAWING NUMBER		
					WSC66-118		
					DESCRIPTION		
	DRAWN	MSM	DATE	21-07-2022	WASHER SQUARE CURVED 6" X 6" 1-1/8" HOLE HDG 1/2" THICKNESS		
APPROVED		DMM	DATE	26-07-2022			
REVISION		-					