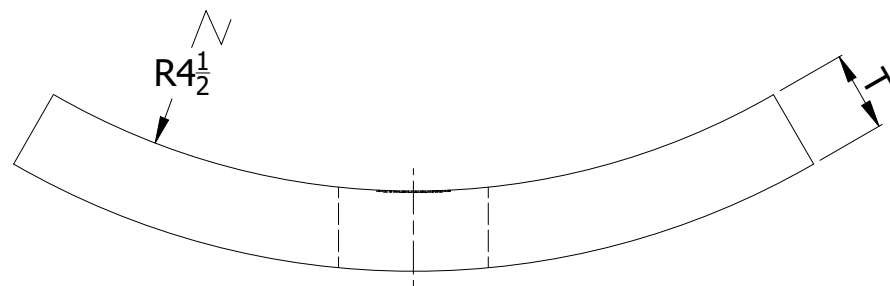
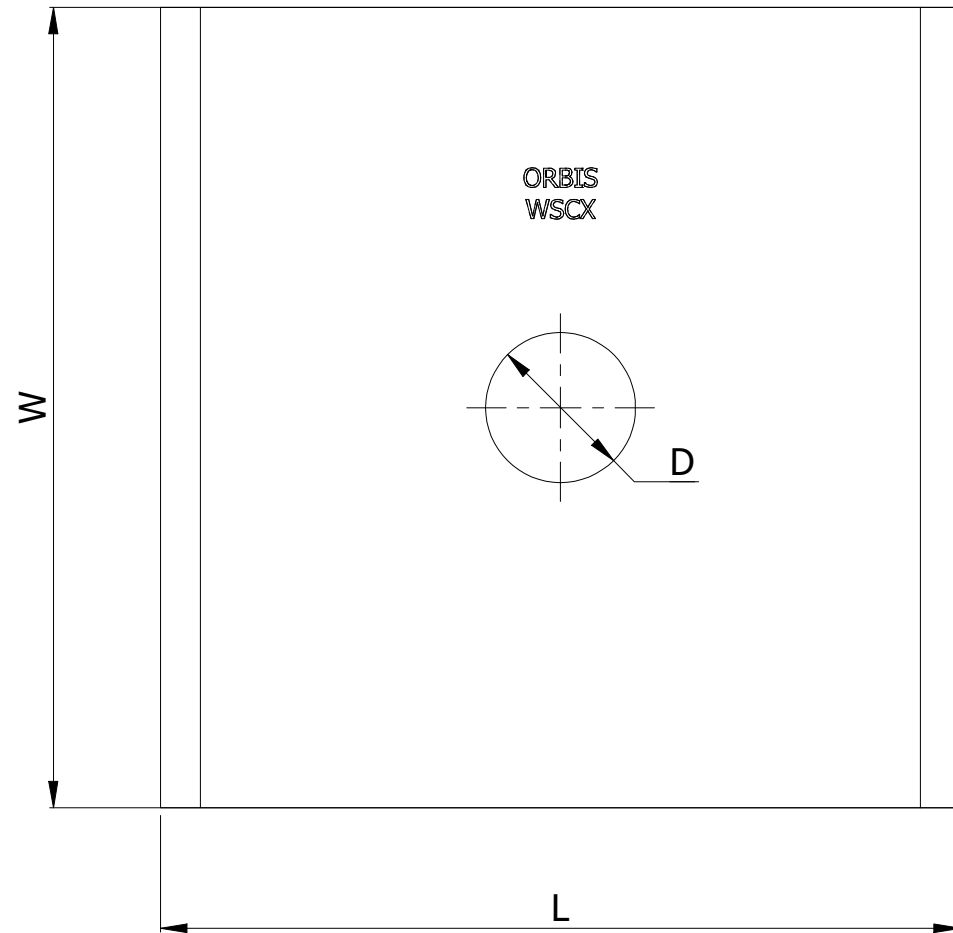


SR NO	STAMP CODE	PART NUMBER	DESCRIPTION	L (INCH)	W (INCH)	D (INCH)	T (INCH)
1	WSC38	WSC5J-1516	WASHER SQUARE CURVED 5" X 5" 15/16" HOLE HDG 1/2" THICKNESS (WSC38)	5	5	15/16	1/2
2	WSC39	WSC58J-116	WASHER SQUARE CURVED 5" X 8" 1-1/16" HOLE HDG 1/2" THICKNESS (WSC39)	5	8	1-1/16	1/2



THICKNESS CHART		
FRACTION	DECIMAL	NOMENCLATURE
5/64"	0.07	A
7/64"	0.1	B
1/8"	0.125	C
9/64"	0.14	D
5/32"	0.15	E
3/16	.1875	F
1/4"	.25	G
3/8"	.375	H
7/16"	.4375	I
1/2"	.5	J

NOTES:

- HOT DIP GALVANIZED AS PER ASTM A-153
- MATERIAL - HOT ROLLED STEEL
- ALL MEASUREMENTS IN INCHES.

THIS DRAWING
CONTAINS
CONFIDENTIAL
INFORMATION
AND IS THE
EXCLUSIVE
PROPERTY OF
ORBIS
MANUFACTURING

ORBIS

DRAWN	MSM	DATE	21-07-2022
APPROVED	DMM	DATE	26-07-2022
REVISION	-		

DRAWING NUMBER

WSC5X-XXXX

DESCRIPTION

WASHER 5" SQUARE CURVED