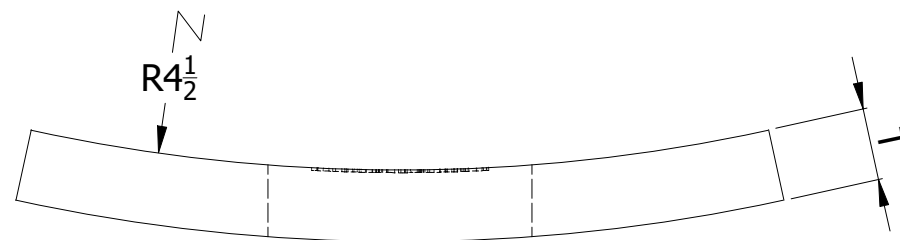
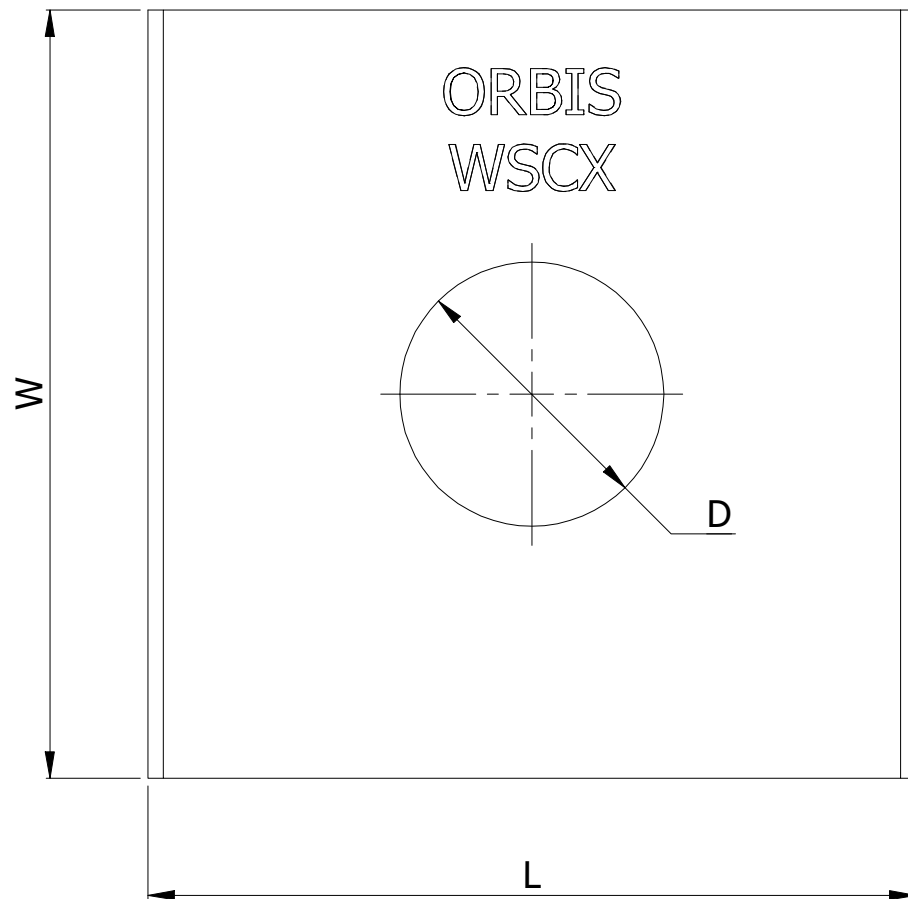


SR NO	STAMP CODE	PART NUMBER	DESCRIPTION	L (INCH)	W (INCH)	D (INCH)	T (INCH)
1	WSC1	WSC2F-1116	WASHER SQUARE CURVED 2" X 2" 11/16" HOLE HDG 3/16" THICKNESS (WSC1)	2	2	11/16	3/16
2	WSC2	WSC2F-1316	WASHER SQUARE CURVED 2" X 2" 13/6 HOLE HDG 3/16" THICKNESS (WSC2)	2	2	13/16	3/16
3	WSC3	WSC225F-1116	WASHER SQUARE CURVED 2-1/4" X 2-1/4" 11/16" HOLE HDG 3/16" THICKNESS (WSC3)	2-1/4	2-1/4	11/16	3/16
4	WSC4	WSC225F-1316	WASHER SQUARE CURVED 2-1/4" X 2-1/4" 13/16" HOLE HDG 3/16" THICKNESS (WSC4)	2-1/4	2-1/4	13/16	3/16
5	WSC5	WSC250F-1116	WASHER SQUARE CURVED 2-1/2" X 2-1/2" 11/16" HOLE HDG 3/16" THICKNESS (WSC5)	2-1/2	2-1/2	11/16	3/16
6	WSC6	WSC250F-1316	WASHER SQUARE CURVED 2-1/2" X 2-1/2" 13/16" HOLE HDG 3/16" THICKNESS (WSC6)	2-1/2	2-1/2	13/16	3/16



THICKNESS CHART		
FRACTION	DECIMAL	NOMENCLATURE
5/64"	0.07	A
7/64"	0.1	B
1/8"	0.125	C
9/64"	0.14	D
5/32"	0.15	E
3/16	.1875	F
1/4"	.25	G
3/8"	.375	H
7/16"	.4375	I
1/2"	.5	J

NOTES:

- HOT DIP GALVANIZED AS PER ASTM A-153
- MATERIAL - HOT ROLLED STEEL
- ALL MEASUREMENTS IN INCHES.

THIS DRAWING
CONTAINS
CONFIDENTIAL
INFORMATION
AND IS THE
EXCLUSIVE
PROPERTY OF
ORBIS
MANUFACTURING

ORBIS

DRAWN	MSM	DATE	21-07-2022
APPROVED	DMM	DATE	26-07-2022
REVISION	-		

DRAWING NUMBER

WSC2X-XXXX

DESCRIPTION

WASHER 2" SQUARE CURVED