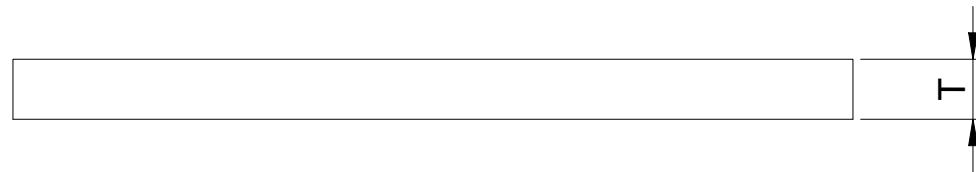
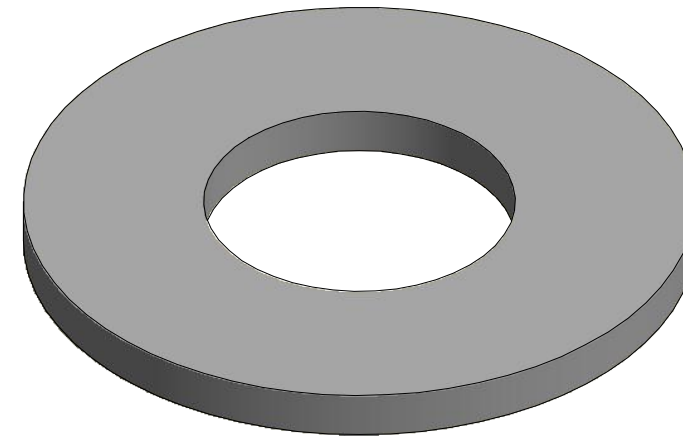
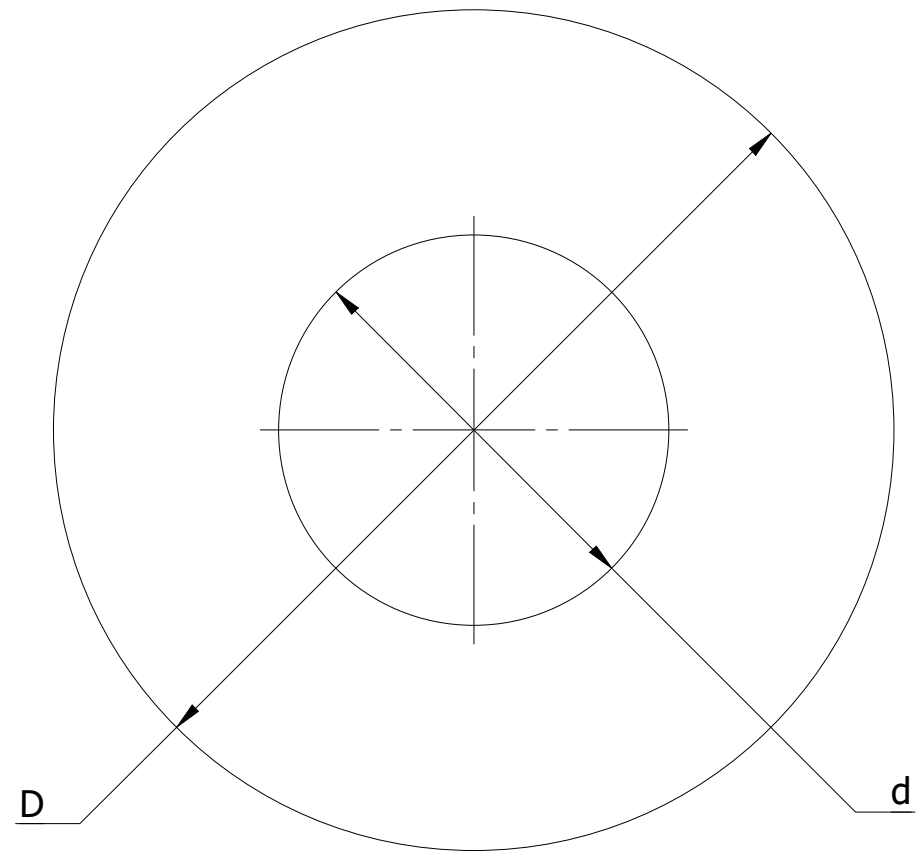


SR NO	PART NUMBER	STAMP CODE	DESCRIPTION	D (INCH)	d (INCH)	T (INCH)
1	WRF2D-1316	WRF6	WASHER ROUND FLAT 2" DIAMETER 13/16" HOLE HDG 9/64" THICKNESS (WRF6)	2	13/16	9/64
2	WRF225E-1516	WRF7	WASHER ROUND FLAT 2-1/4" DIAMETER 15/16" HOLE HDG 5/32" THICKNESS (WRF7)	2-1/4	15/16	5/32
3	WRF250E-116	WRF8	WASHER ROUND FLAT 2-1/2" DIAMETER 1-1/16" HOLE HDG 5/32" THICKNESS (WRF8)	2-1/2	1-1/16	5/32
4	WRF2C-716	WRF13	WASHER ROUND FLAT 2" DIAMETER 7/16" HOLE HDG 1/8" THICKNESS (WRF13)	2	7/16	1/8
5	WRF2C-1116	WRF13.5	WASHER ROUND FLAT 2" DIAMETER 11/16" HOLE HDG 1/8" THICKNESS (WRF13.5)	2	11/16	1/8
6	WRF2C-916	WRF14	WASHER ROUND FLAT 2" DIAMETER 9/16" HOLE HDG 1/8" THICKNESS (WRF14)	2	9/16	1/8
7	WRF2C-1316	WRF15	WASHER ROUND FLAT 2" DIAMETER 13/16" HOLE HDG 1/8" THICKNESS (WRF15)	2	13/16	1/8
8	WRF2G-1116	WRF16	WASHER ROUND FLAT 2" DIAMETER 11/16" HOLE HDG 1/4" THICKNESS (WRF16)	2	11/16	1/4
9	WRF2G-1316	WRF17	WASHER ROUND FLAT 2" DIAMETER 13/16" HOLE HDG 1/4" THICKNESS (WRF17)	2	13/16	1/4
10	WRF2G-1516	WRF18	WASHER ROUND FLAT 2" DIAMETER 15/16" HOLE HDG 1/4" THICKNESS (WRF18)	2	15/16	1/4



THICKNESS CHART		
FRACTION	DECIMAL	NOMENCLATURE
5/64"	0.07	A
7/64"	0.1	B
1/8"	0.125	C
9/64"	0.14	D
5/32"	0.15	E
3/16	.1875	F
1/4"	.25	G
3/8"	.375	H
7/16"	.4375	I
1/2"	.5	J

**NOTES:**

- HOT DIP GALVANIZED AS PER ASTM A-153
- MATERIAL:- HOT ROLLED STEEL
- ALL DIMENSIONS ARE IN INCHES.

THIS DRAWING  
CONTAINS  
CONFIDENTIAL  
INFORMATION  
AND IS THE  
EXCLUSIVE  
PROPERTY OF  
ORBIS  
MANUFACTURING

**ORBIS**

DRAWN	MSM	DATE	22-07-2022
APPROVED	DMM	DATE	27-07-2022
REVISION	-		

**DRAWING NUMBER**

WRF2XXX-XXX

**DESCRIPTION**

WASHER 2" ROUND FAMILY