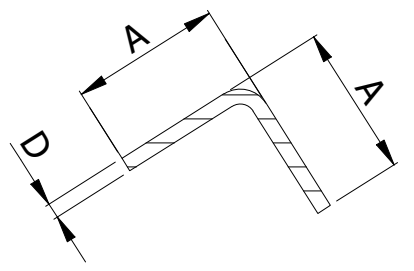
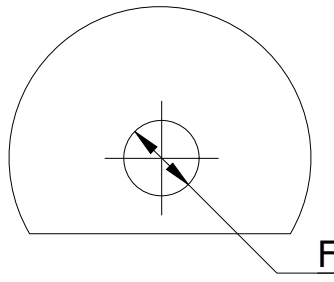
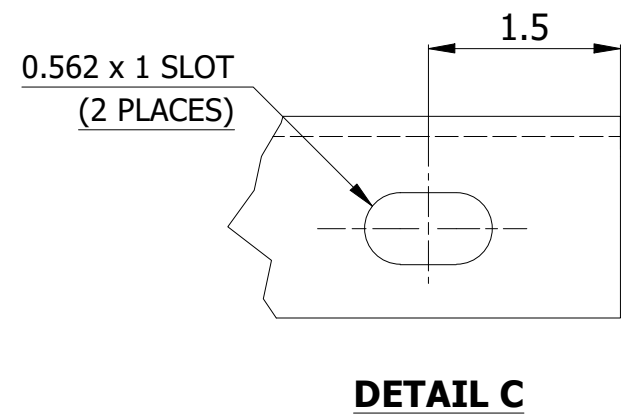
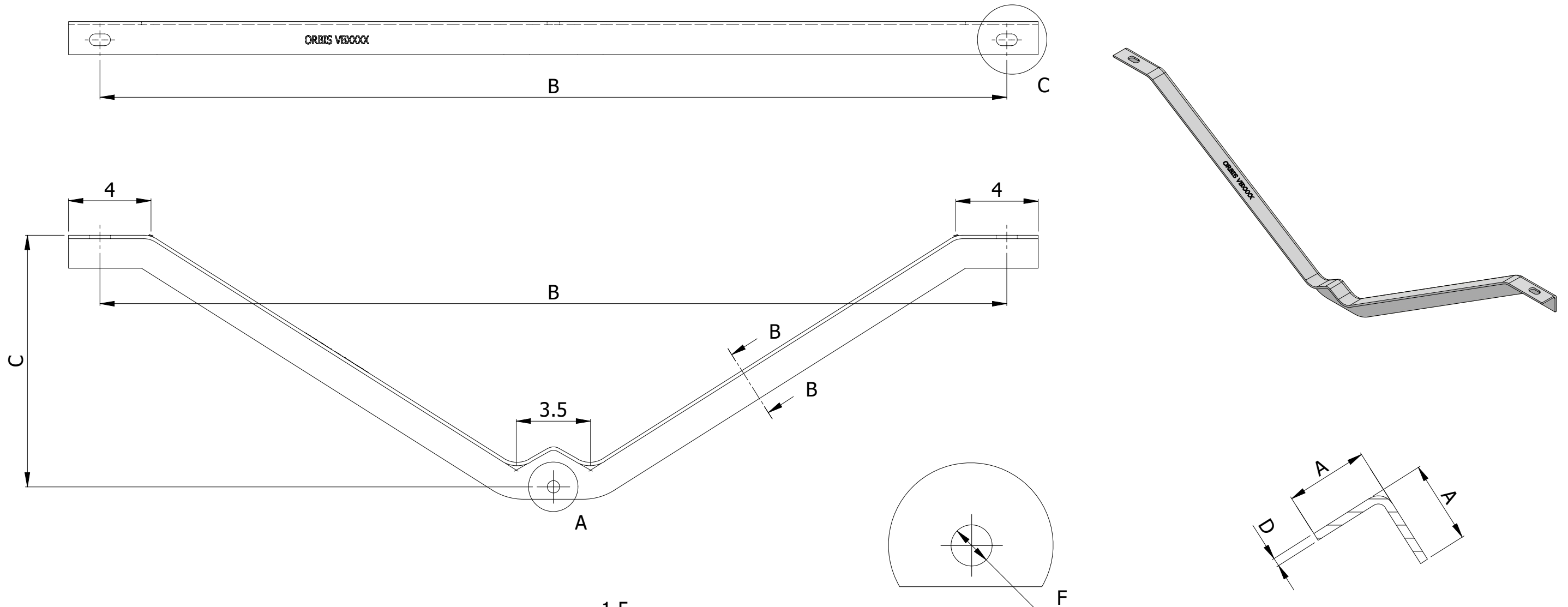


SR NO	PART NUMBER	DESCRIPTION	ANGLE "A"	SPAN "B"	DEPTH "C"	THICKNESS "D"	HOLE "F"
1	VB4034A	V-BRACE 40" SPREAD 3/4" BOLT HOLES 1.5" WIDE BRACE	1.5"	40"	12"	0.16	13/16"
2	VB4858A	V-BRACE 48" SPREAD 5/8" BOLT HOLES 1.5" WIDE BRACE	1.5"	48"	18"	0.16	11/16"
3	VB6058A	V-BRACE 60" SPREAD 5/8" BOLT HOLES 1.5" WIDE BRACE	1.5"	60"	18"	0.16	11/16"
4	VB6058B	V-BRACE 60" SPREAD 5/8" BOLT HOLES 1.75" WIDE BRACE	1.75"	60"	18"	0.2	11/16"
5	VB7258B	V-BRACE 72" SPREAD 5/8" BOLT HOLES 1.75" WIDE BRACE	1.75"	72"	22"	0.2	11/16"
6	VB7234B	V-BRACE 72" SPREAD 3/4" BOLT HOLES 1.75" WIDE BRACE	1.75"	72"	22"	0.2	13/16"



- NOTES:
1. GALVANIZED AS PER CSA G164
 2. MATERIAL: HOT ROLLED STEEL
 3. ALL MEASUREMENTS IN INCHES
 4. ULTIMATE STRENGTH: 5,625 LBF

THIS DRAWING CONTAINS CONFIDENTIAL INFORMATION AND IS THE EXCLUSIVE PROPERTY OF ORBIS MANUFACTURING



DRAWN	MSM	DATE	22-07-2022
APPROVED	DMM	DATE	27-07-2022
REVISION	R2	RD	26-07-2025

DRAWING NUMBER	VBXXXX
DESCRIPTION	V-BRACE