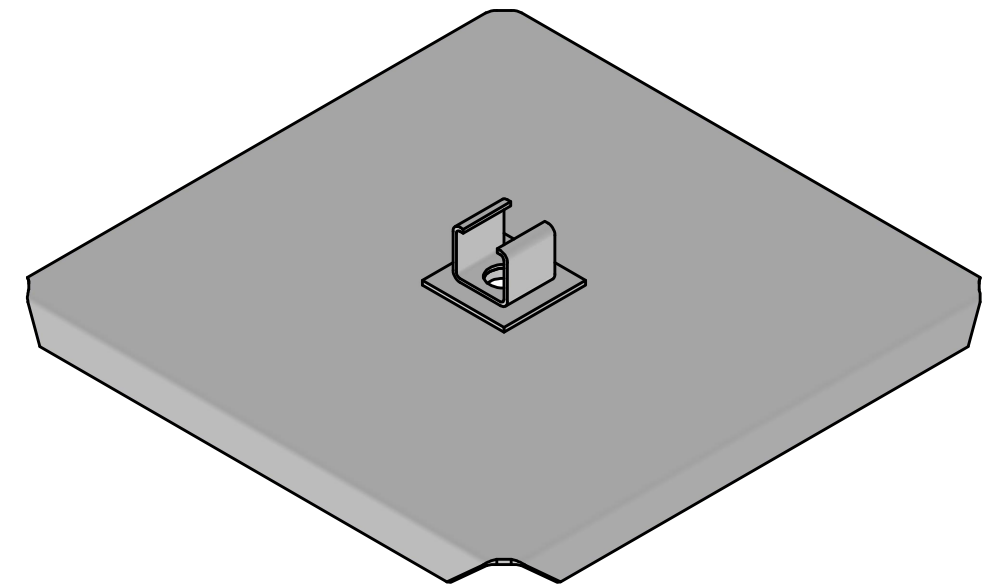
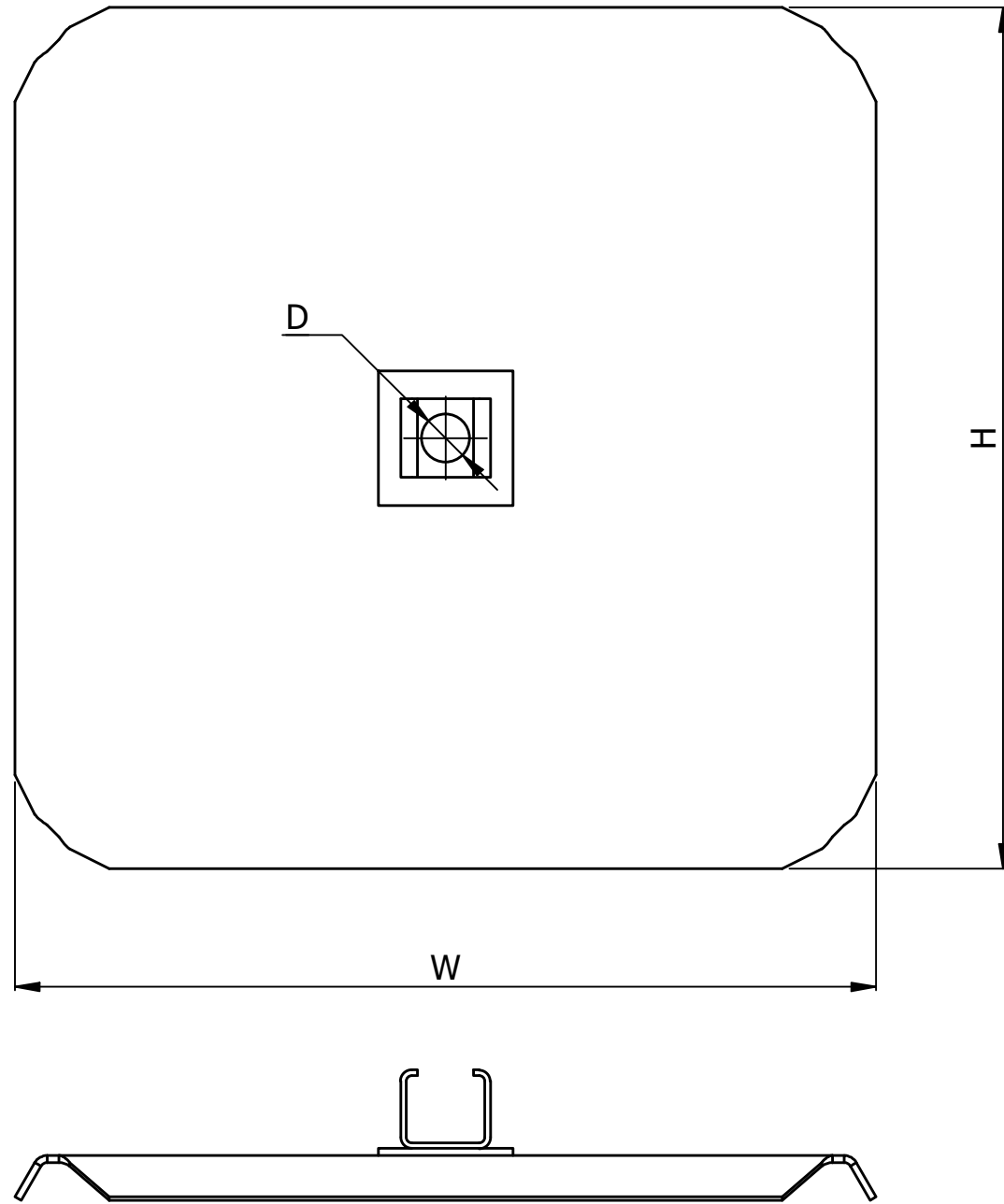


SR NO	PART NUMBER	DESCRIPTION	ANCHOR ROD	WIDTH (W)	HEIGHT (H)	CENTRE HOLE (D)	AREA (SQ IN)
1	SAP16A	SQUARE ANCHOR PLATE 250 SQ IN AREA 5/8-3/4" ROD	5/8 - 3/4	16 1/4	16 1/4	13/16	250
2	SAP16B	SQUARE ANCHOR PLATE 250 SQ IN AREA 3/4-1" ROD	3/4 - 1	16 1/4	16 1/4	1-1/16	250
3	SAP20B	SQUARE ANCHOR PLATE 400 SQ IN AREA 3/4-1" ROD	3/4 - 1	20	20	1-1/16	400
4	SAP20C	SQUARE ANCHOR PLATE 400 SQ IN AREA 1-1 1/4" ROD	1 - 1 1/4	20	20	1-5/16	400
5	SAP28D	SQUARE ANCHOR PLATE 750 SQ IN AREA 1-1 1/4" ROD	1 - 1 1/4	28	28	1-5/16	750



NOTES:-

1. MATERIAL: STEEL
2. FINISH: HOT DIPPED GALVANIZED AS PER ASTM A153
3. TOLERANCE: $\pm 5\%$, ALL MEASUREMENTS IN INCHES.

THIS DRAWING CONTAINS CONFIDENTIAL INFORMATION AND IS THE EXCLUSIVE PROPERTY OF ORBIS MANUFACTURING	ORBIS			DRAWING NUMBER	
				SAPXXX	
				DESCRIPTION	
				SQUARE ANCHOR PLATE FOR ANCHOR ROD	
DRAWN	MSM	DATE	24-03-2023		
APPROVED	DMM	DATE	28-03-2023		
REVISION	-				