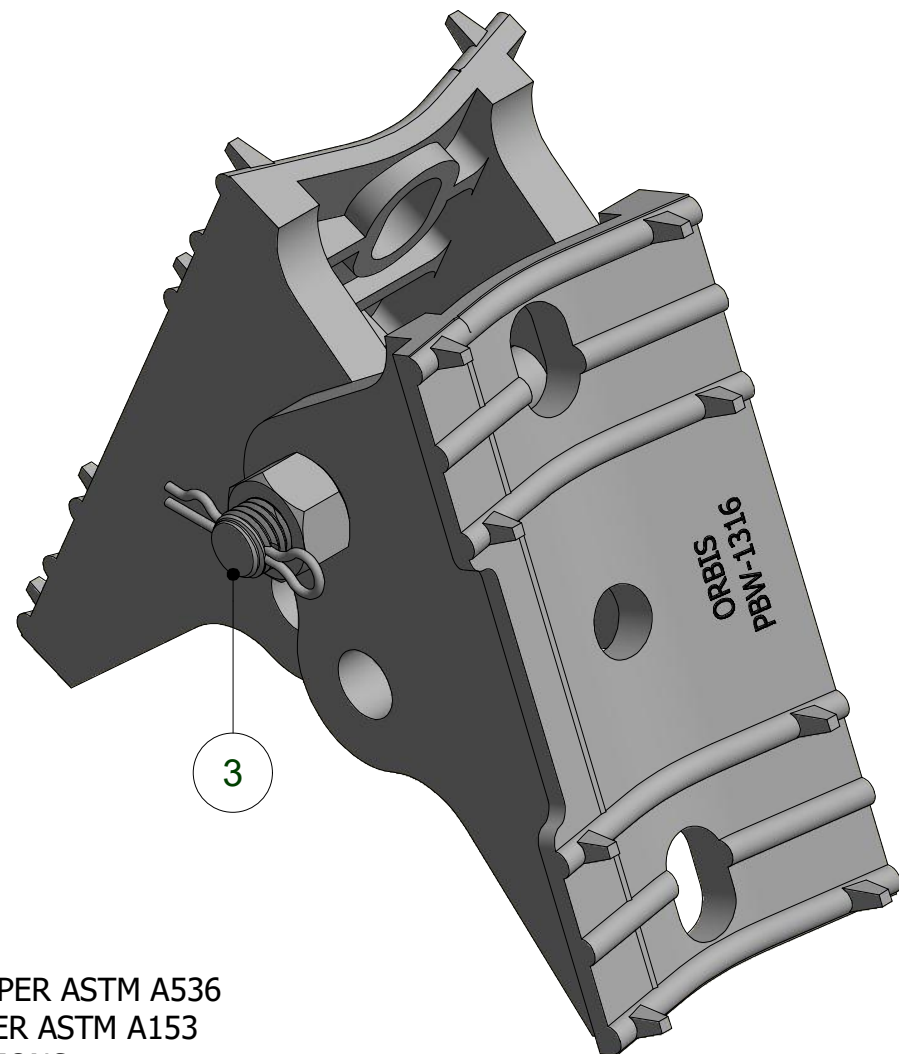
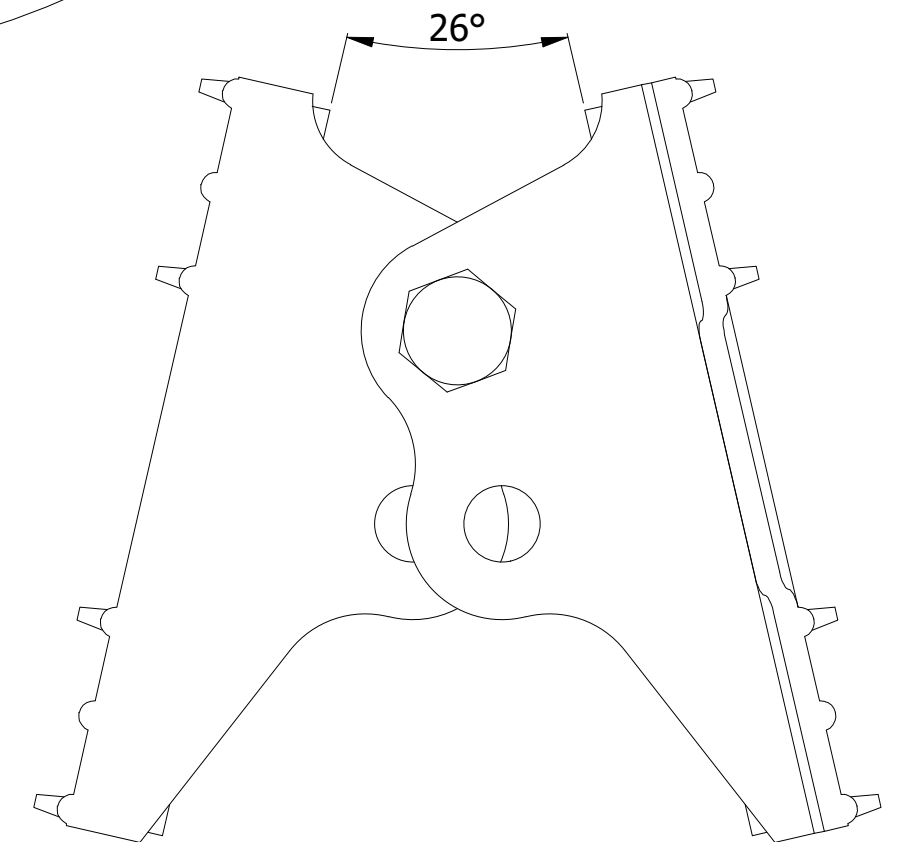
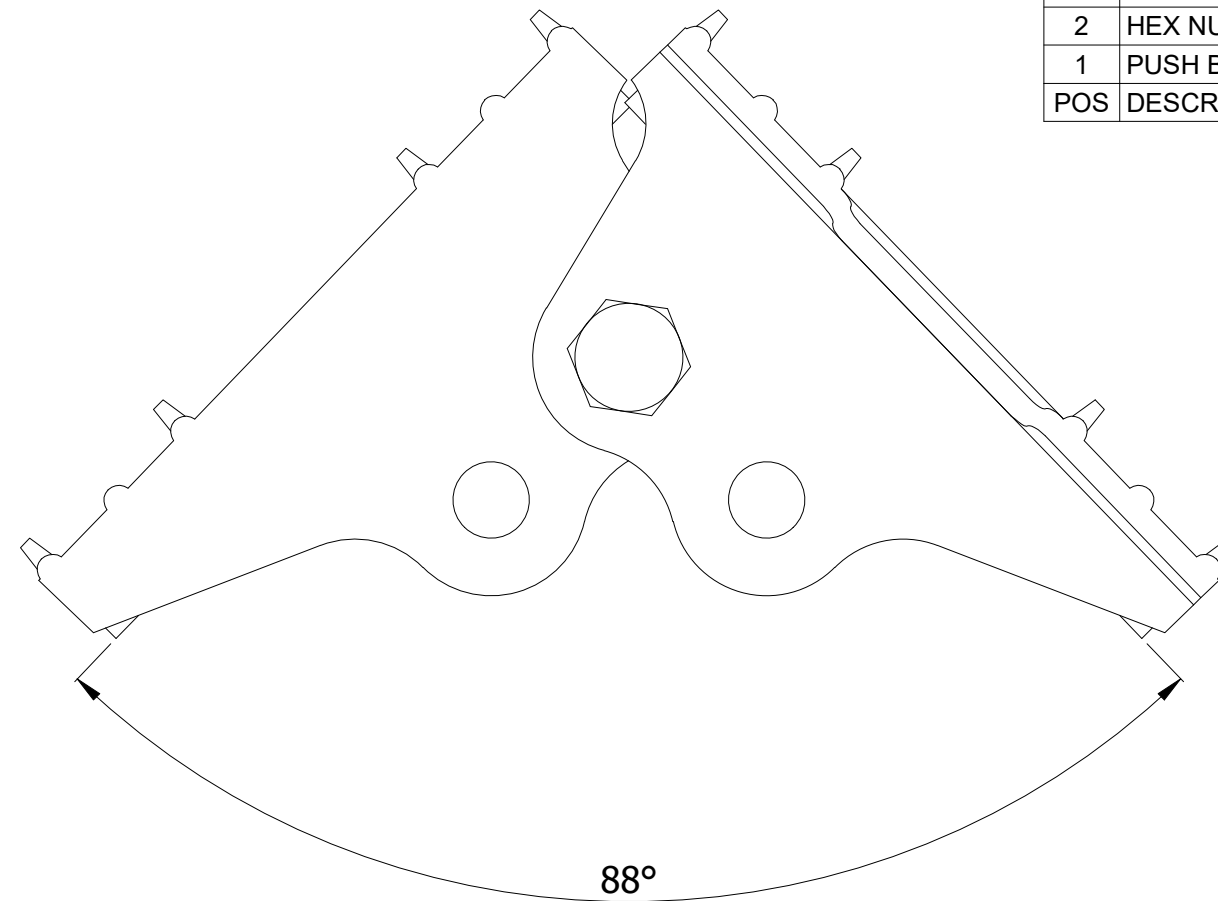
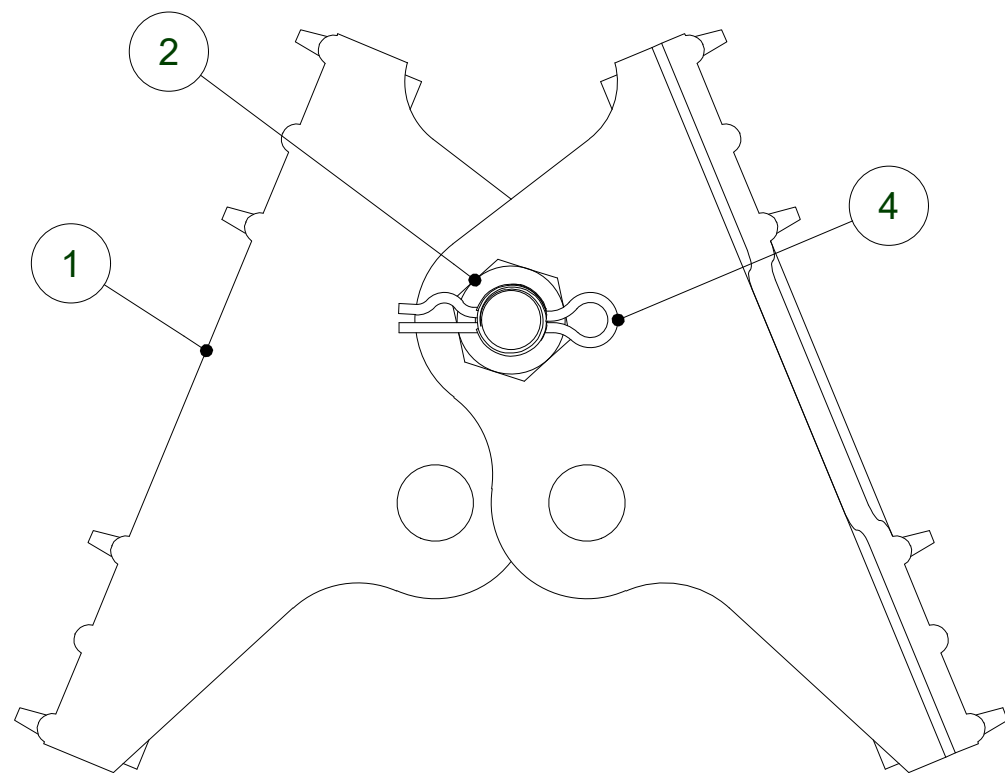


4	COTTER PIN	1
3	HEX BOLT	1
2	HEX NUT	1
1	PUSH BRACE WOOD POLE USE 3/4" HARDWARE	2
POS	DESCRIPTION	QTY



NOTE:
 1. MATERIAL: CAST DUCTILE IRON AS PER ASTM A536
 2. FINISH: HOT DIP GALVANIZED AS PER ASTM A153
 3. TOLERANCE: ±5% FOR ALL DIMENSIONS
 4. ALL DIMENSIONS ARE IN MM.

THIS DRAWING
 CONTAINS
 CONFIDENTIAL
 INFORMATION
 AND IS THE
 EXCLUSIVE
 PROPERTY OF
 ORBIS
 MANUFACTURING

ORBIS

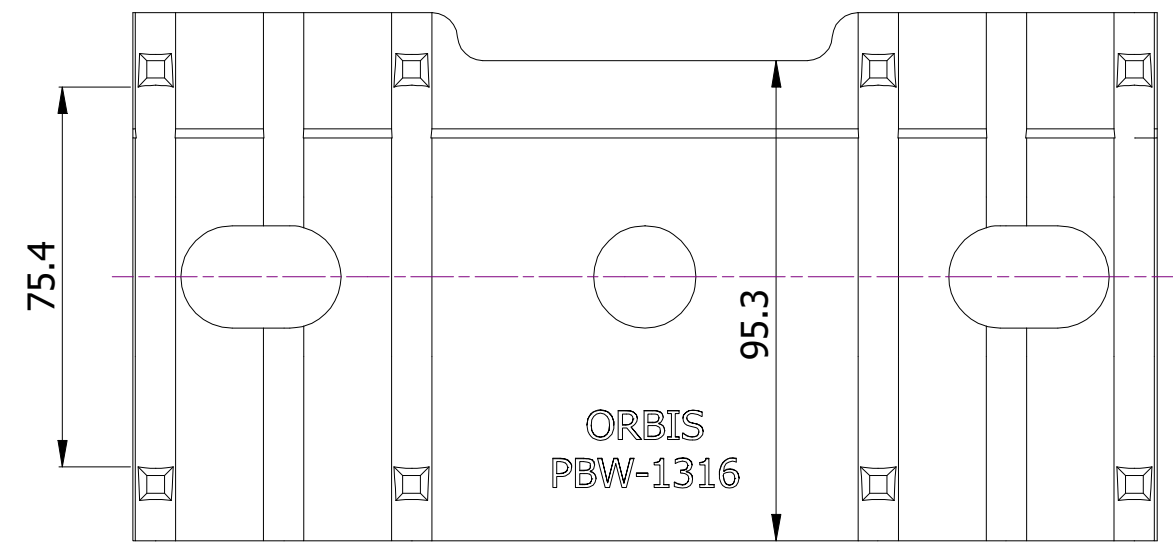
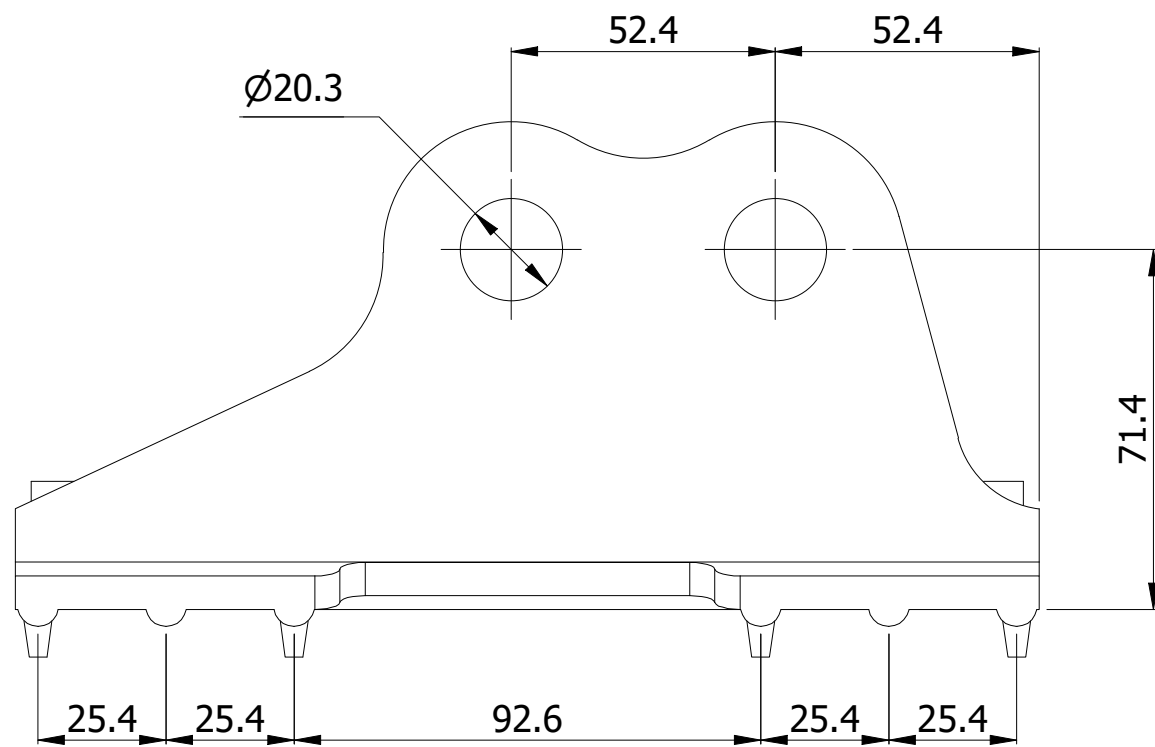
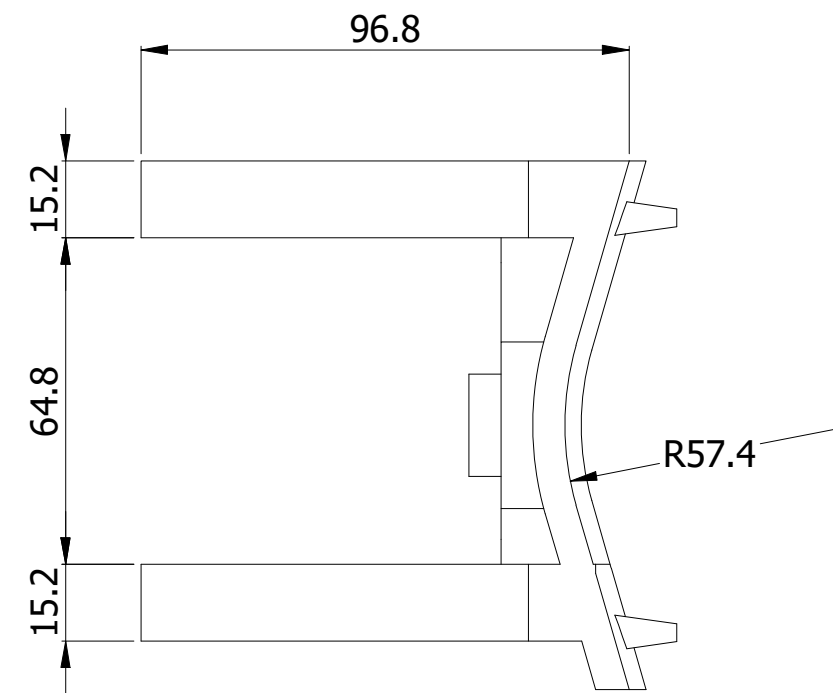
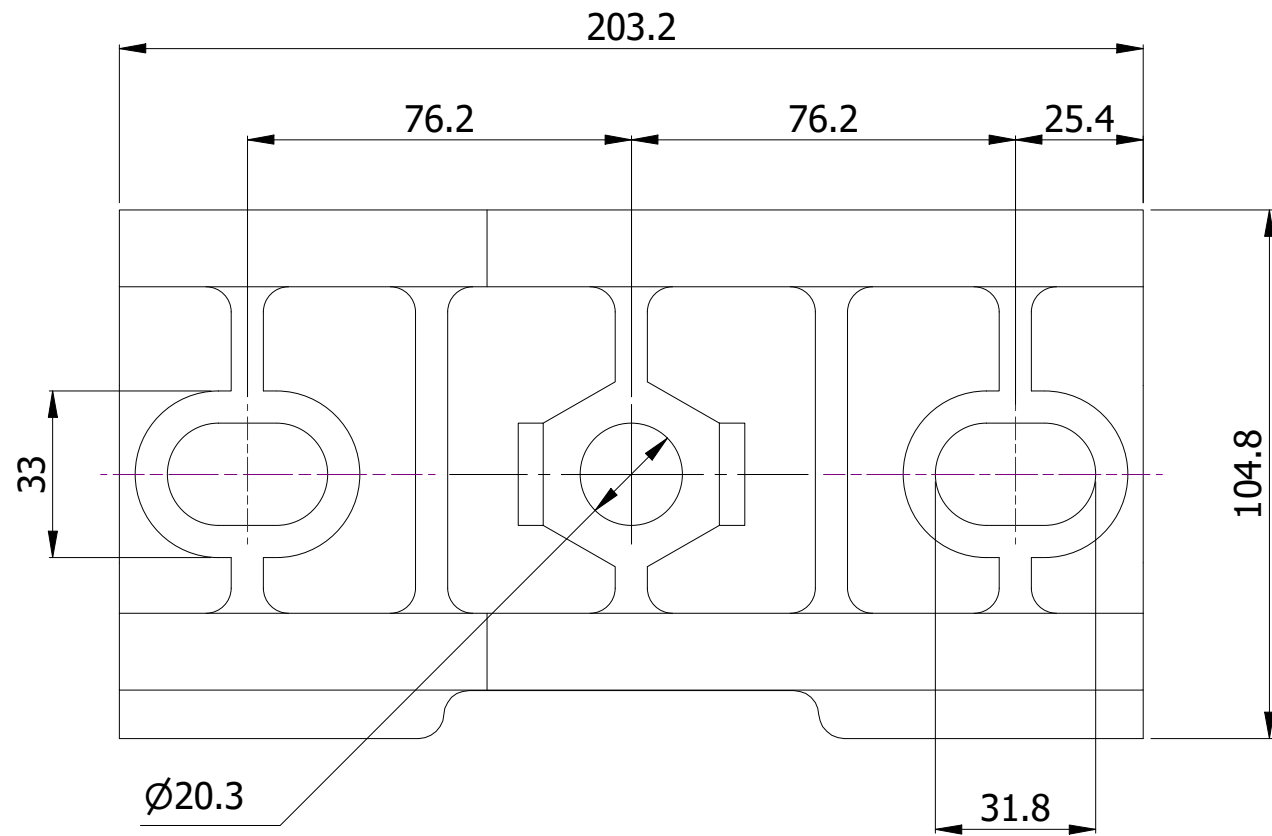
DRAWN	MSM	DATE	02-08-2022
APPROVED	DMM	DATE	09-08-2022
REVISION	-		

DRAWING NUMBER

PBW-1316

DESCRIPTION

PUSH BRACE WOOD POLE USE 3/4"
 HARDWARE



VIEW A

NOTE:-

1. MATERIAL: CAST DUCTILE IRON AS PER ASTM A536
2. FINISH: HOT DIP GALVANIZED AS PER ASTM A153
3. TOLERANCE: ±5% FOR ALL DIMENSIONS
4. ALL DIMENSIONS ARE IN MM.



THIS DRAWING
CONTAINS
CONFIDENTIAL
INFORMATION
AND IS THE
EXCLUSIVE
PROPERTY OF
ORBIS
MANUFACTURING



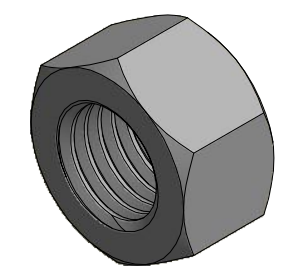
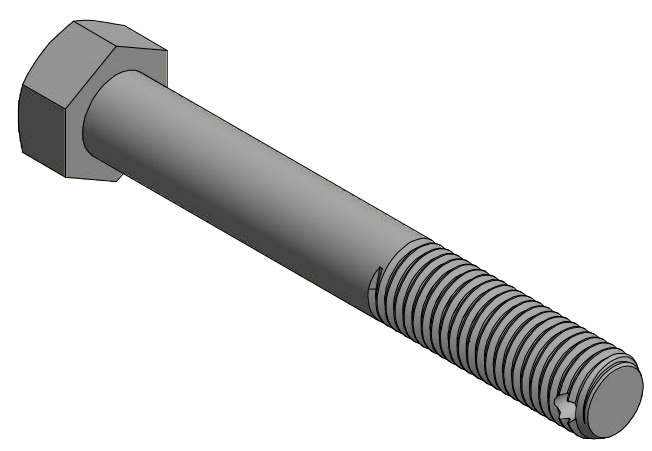
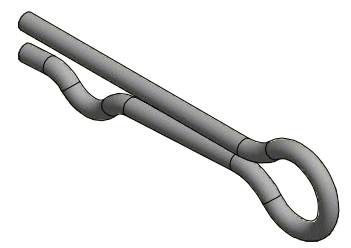
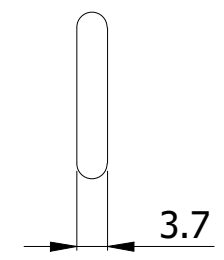
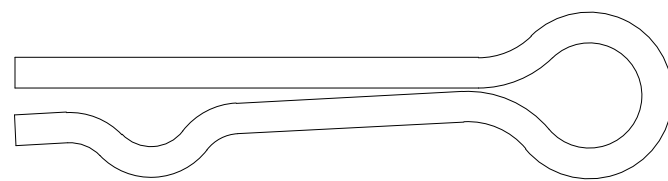
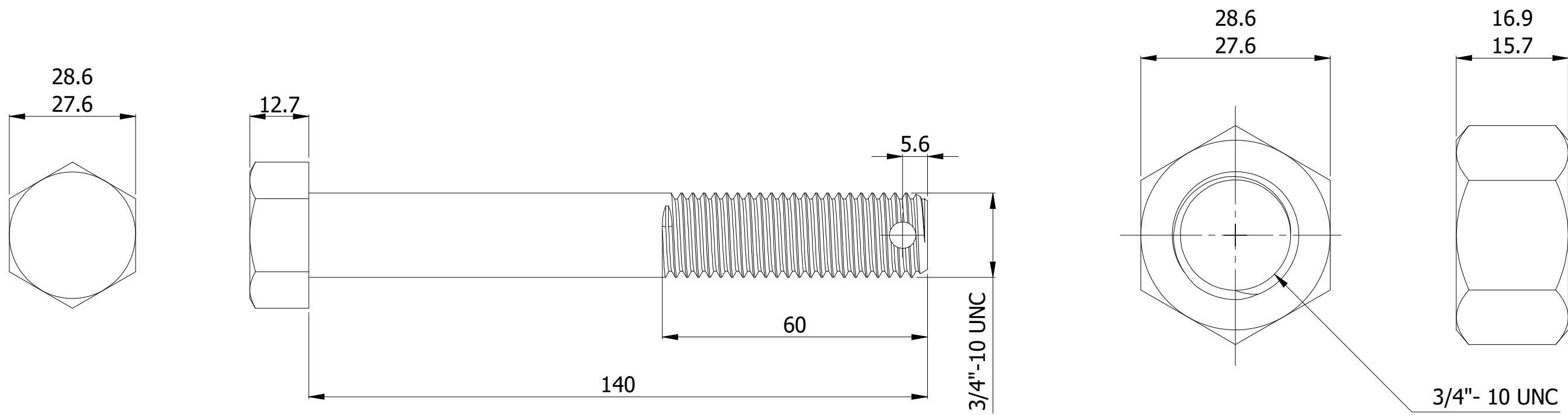
DRAWN	MSM	DATE	02-08-2022
APPROVED	DMM	DATE	09-08-2022
REVISION	-		

DRAWING NUMBER

PBW-1316

DESCRIPTION

PUSH BRACE WOOD POLE USE 3/4"
HARDWARE



- NOTES:
1. MATERIAL: CAST DUCTILE IRON AS PER ASTM A536
 2. FINISH: HOT DIP GALVANIZED AS PER ASTM A153
 3. TOLERANCE: $\pm 5\%$ FOR ALL DIMENSIONS
 4. ALL DIMENSIONS ARE IN MM.

THIS DRAWING
CONTAINS
CONFIDENTIAL
INFORMATION
AND IS THE
EXCLUSIVE
PROPERTY OF
ORBIS
MANUFACTURING



DRAWN	MSM	DATE	02-08-2022
APPROVED	DMM	DATE	09-08-2022
REVISION	-		

DRAWING NUMBER
PBW-1316
DESCRIPTION
PUSH BRACE WOOD POLE USE 3/4" HARDWARE