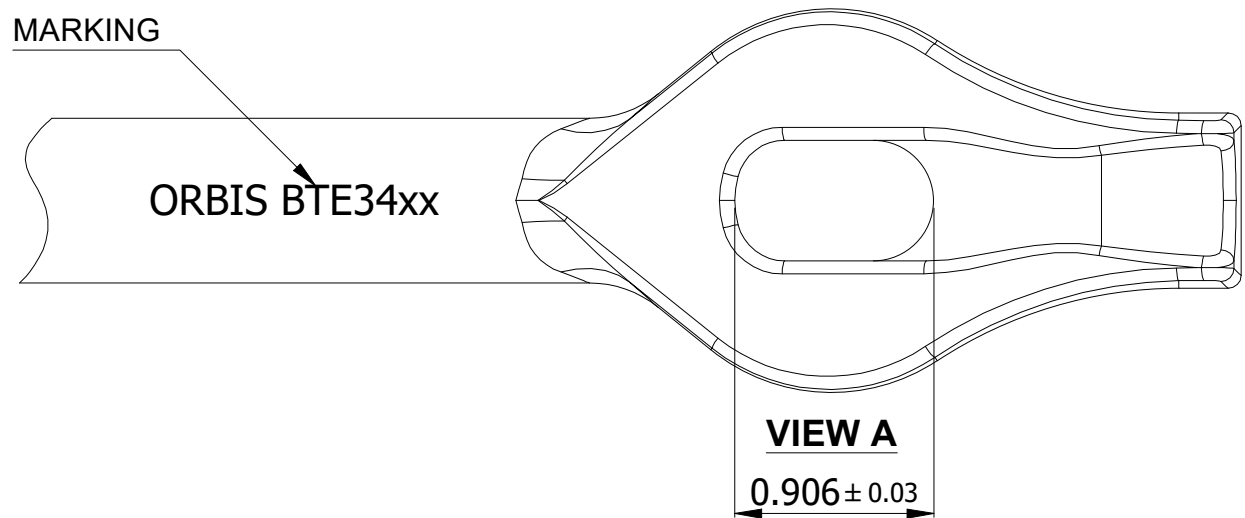
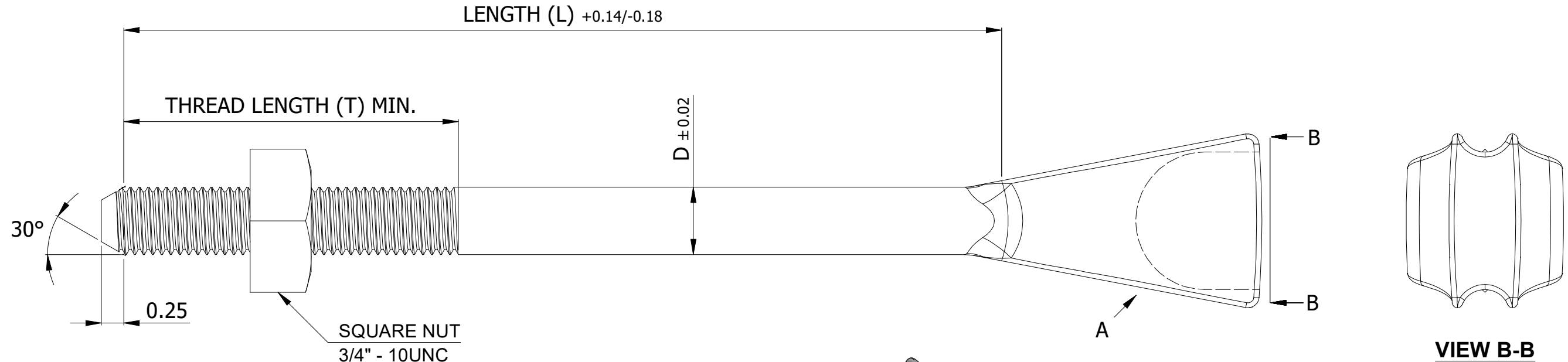


SR NO	PART NUMBER	DESCRIPTION	L (INCH)	T (INCH)	D (INCH)
1	BTE3406	BOLT THIMBLE EYE 3/4" x 6"	6	4	3/4
2	BTE3408	BOLT THIMBLE EYE 3/4" x 8"	8	4	3/4
3	BTE3410	BOLT THIMBLE EYE 3/4" x 10"	10	4	3/4
4	BTE3412	BOLT THIMBLE EYE 3/4" x 12"	12	6	3/4
5	BTE3414	BOLT THIMBLE EYE 3/4" x 14"	14	6	3/4
6	BTE3416	BOLT THIMBLE EYE 3/4" x 16"	16	6	3/4
7	BTE3418	BOLT THIMBLE EYE 3/4" x 18"	18	6	3/4
8	BTE3420	BOLT THIMBLE EYE 3/4" x 20"	20	6	3/4



- NOTES:
1. MATERIAL: STEEL
 2. MINIMUM TENSILE STRENGTH: 20,200 LBS.
 3. THREADS: 3/4" - 10 UNC
 4. FINISH: HOT DIP GALVANIZED AS PER ASTM A153

THIS DRAWING CONTAINS CONFIDENTIAL INFORMATION AND IS THE EXCLUSIVE PROPERTY OF ORBIS MANUFACTURING	ORBIS				DRAWING NUMBER	
					BTE34xx	
					DESCRIPTION	
					3/4" THIMBLE EYE BOLT	
DRAWN	MSM	DATE	25-10-2024			
APPROVED	DMM	DATE	31-10-2024			
REVISION	-					